



# NDUFA4 Polyclonal Antibody

<b>Catalog No</b>	YP-Ab-02698
<b>Isotype</b>	IgG
<b>Reactivity</b>	Human;Mouse;Rat
<b>Applications</b>	WB;IHC;IF;ELISA
<b>Gene Name</b>	NDUFA4
<b>Protein Name</b>	NADH dehydrogenase [ubiquinone] 1 alpha subcomplex subunit 4
<b>Immunogen</b>	The antiserum was produced against synthesized peptide derived from human NDUFA4. AA range:32-81
<b>Specificity</b>	NDUFA4 Polyclonal Antibody detects endogenous levels of NDUFA4 protein.
<b>Formulation</b>	Liquid in PBS containing 50% glycerol, 0.5% BSA and 0.02% sodium azide.
<b>Source</b>	Polyclonal, Rabbit,IgG
<b>Purification</b>	The antibody was affinity-purified from rabbit antiserum by affinity-chromatography using epitope-specific immunogen.
<b>Dilution</b>	WB: 1/500 - 1/2000. IHC: 1/100 - 1/300. ELISA: 1/10000.. IF 1:50-200
<b>Concentration</b>	1 mg/ml
<b>Purity</b>	≥90%
<b>Storage Stability</b>	-20°C/1 year
<b>Synonyms</b>	NDUFA4; NADH dehydrogenase [ubiquinone] 1 alpha subcomplex subunit 4; Complex I-MLRQ; CI-MLRQ; NADH-ubiquinone oxidoreductase MLRQ subunit
<b>Observed Band</b>	9kD
<b>Cell Pathway</b>	Mitochondrion inner membrane ; Single-pass membrane protein .
<b>Tissue Specificity</b>	Brain,Liver,
<b>Function</b>	function:Accessory subunit of the mitochondrial membrane respiratory chain NADH dehydrogenase (Complex I), that is believed to be not involved in catalysis. Complex I functions in the transfer of electrons from NADH to the respiratory chain. The immediate electron acceptor for the enzyme is believed to be ubiquinone.,similarity:Belongs to the complex I NDUFA4 subunit family.,subunit:Mammalian complex I is composed of 45 different subunits.,
<b>Background</b>	The protein encoded by this gene belongs to the complex I 9kDa subunit family. Mammalian complex I of mitochondrial respiratory chain is composed of 45 different subunits. This protein has NADH dehydrogenase activity and oxidoreductase activity. It transfers electrons from NADH to the respiratory chain. The immediate electron acceptor for the enzyme is believed to be ubiquinone. [provided by RefSeq, Jul 2008],



**matters needing attention**

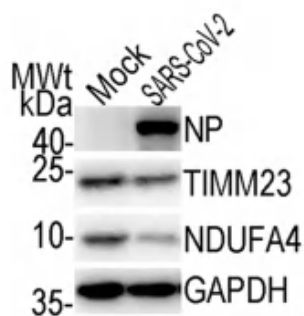
Avoid repeated freezing and thawing!

**Usage suggestions**

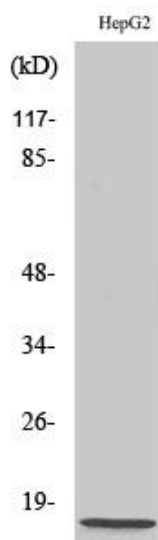
This product can be used in immunological reaction related experiments. For more information, please consult technical personnel.

## Products Images

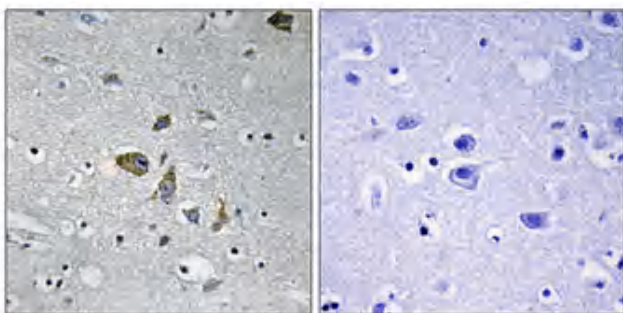
**B**



Wang, P., Luo, R., Zhang, M. et al. A cross-talk between epithelium and endothelium mediates human alveolar–capillary injury during SARS-CoV-2 infection. *Cell Death Dis* 11, 1042 (2020).



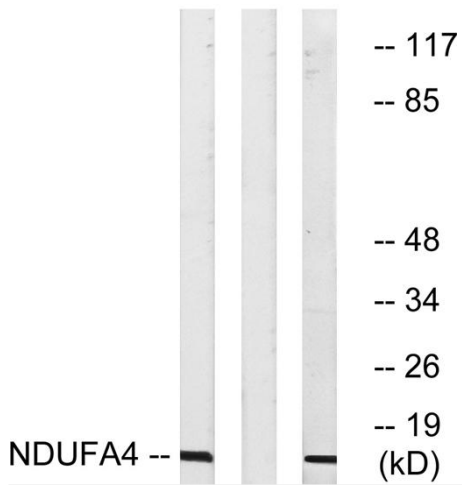
Western Blot analysis of various cells using NDUFA4 Polyclonal Antibody



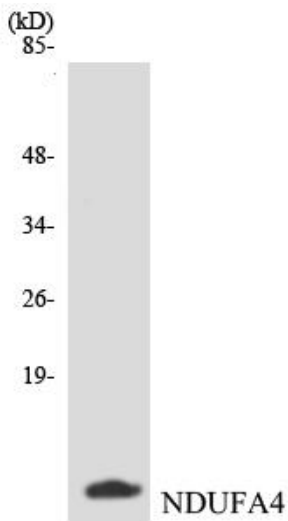
Immunohistochemical analysis of paraffin-embedded Human brain. Antibody was diluted at 1:100(4° overnight). High-pressure and temperature Tris-EDTA,pH8.0 was used for antigen retrieval. Negative contrl (right) obtaned from antibody was pre-absorbed by immunogen peptide.



HepG2 HepG2 RAW 264.7



Western blot analysis of lysates from HepG2 and RAW264.7 cells, using NDUFA4 Antibody. The lane on the right is blocked with the synthesized peptide.



Western blot analysis of the lysates from HepG2 cells using NDUFA4 antibody.